



# Implementing AI Tools in Your Institution:

AI adoption in education is no longer optional—it's essential for staying competitive and efficient. This checklist helps vocational and training institutions implement AI tools successfully, focusing on AI-assisted grading tools:

- Reducing administrative workload
- Enhancing learning outcomes
- Streamlining assessment processes

## Who This Guide Is For:

- CEOs & COOs
- Heads of Learning
- Training Institution Leaders

## Using This Checklist:

- ✓ Work through each section sequentially
- ✓ Check off completed items
- ✓ Customise priorities to your institution

Let this checklist be your roadmap to harnessing the power of AI in education while avoiding common pitfalls and maximising its potential benefits.

# 1.

## Understand the AI Landscape

- ❑ Research how AI tools, such as AI-assisted grading, align with your institution's strategic goals.
- ❑ Identify specific areas for improvement where AI can provide value (e.g., assessment, student engagement, curriculum design).
- ❑ Understand key trends and advancements in AI for education

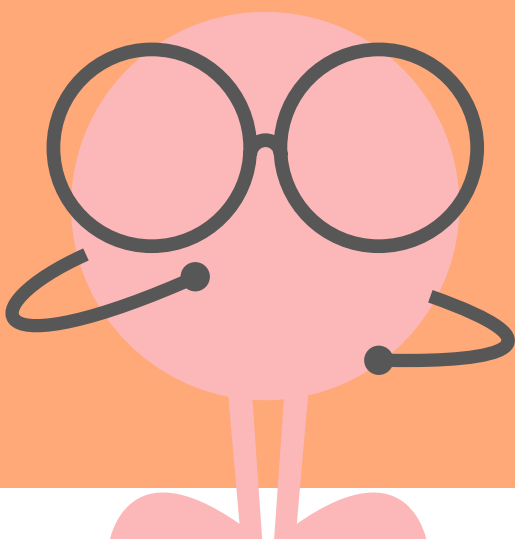
**Responsible:** Leadership Team/Head of Learning

# 2.

## Set Clear Goals for Success

- ❑ Define specific objectives for using AI tools: E.g Increase grading efficiency by 50%.
- ❑ Identify success metrics (KPIs): e.g., time saved on administrative tasks.
- ❑ Align AI goals with the broader institutional mission and compliance standards.

**Responsible party:** Leadership & IT Teams



# 3.

## Evaluate AI Tools

- ☐ Research available AI tools tailored for educational institutions (e.g., Graide for AI-assisted grading).
- ☐ Request demos or trials of AI tools to understand their functionality and fit.
- ☐ Compare tools based on:
  - » What is happening with your data? Are they using off-the-shelf models?
  - » Is the AI model explainable, auditable, and transparent?
  - » Does it integrate with existing systems?
  - » How does it comply with data security and education regulations (e.g., GDPR).
- ☐ Develop a shortlist of potential solutions based on stakeholder input.

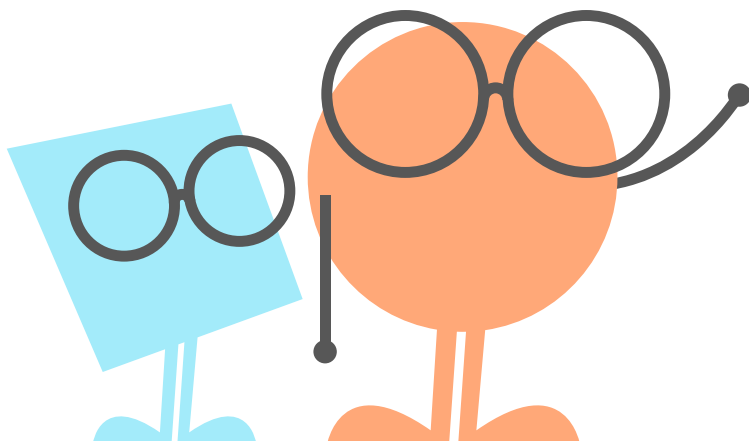
**Responsible Party:** Head of Learning & IT Department

# 4.

## Engage Stakeholders

- ☐ Host workshops or meetings to explain the benefits of AI tools to staff and educators.
- ☐ Address potential concerns, such as:
  - » Fear of job displacement.
  - » Data privacy issues.
- ☐ Gather feedback from key stakeholders (teachers, admin staff, and students) to ensure buy-in.
- ☐ Share success stories from other institutions that have implemented similar AI Solutions.

**Responsible Party:** Leadership & Comms



# 5.

## Pilot and Test

- ☐ Select a specific department, course, or program for a pilot implementation.
- ☐ Set clear pilot objectives and metrics for success.
- ☐ Train staff and educators involved in the pilot phase.
- ☐ Monitor results and gather feedback from users:
  - » Did the tool improve efficiency or outcomes?
  - » Were there challenges in adoption or use?
- ☐ Refine the implementation plan based on findings.

**Responsible Party:** Project Lead



# 6.

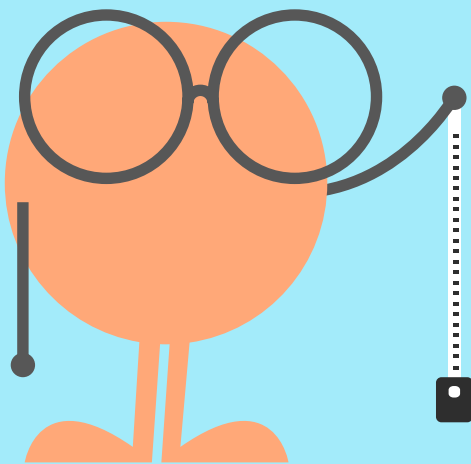
## Full implementation

- ☐ Roll out the AI tool institution-wide, prioritising departments based on readiness.
- ☐ Provide comprehensive training sessions for all staff and educators.
- ☐ Develop a support system:
  - » Dedicated IT support for troubleshooting.
  - » Helpdesk or FAQs for common issues.
- ☐ Communicate the success and benefits of the AI tool to maintain momentum and enthusiasm.

**Responsible party:** Leadership & IT Teams

# 7.

## Measure and Optimize



- ☐ Regularly assess the AI tool's impact against defined KPIs:
  - » Is grading time reduced?
  - » Are student outcomes improving?
  - » Are educators satisfied with the tool?
  - » Are students satisfied with the tool?
- ☐ Gather continuous feedback from staff and students.
- ☐ Iterate and optimise processes based on:
  - » Feedback from users.
  - » Updates or new features from the AI tool provider.
- ☐ Stay informed about new developments in AI and evaluate whether additional tools can enhance operations.
- ☐ Engage with the AI tool provider for training and best practices.

**Responsible Party:** Project Lead



Kickstart your AI implementation today.

**Explore more:** Gride Blog: [Best Practices for AI-Assisted Grading](#)

**Schedule a consultation:** Contact Graide's team to discuss your institution's unique needs.

**Visit our website:** [www.graide.co.uk](http://www.graide.co.uk)